

**Lifting accessories Specification**

**AS-NNR25VHS1-1000**

**AS-NNR25VHS1-2500**

**AS-NNR25VHD1-1000**

**AS-NNR25VHD1-2500**

**AS-NNR25LHX-0038**

**AS-NNR25LHX-0080**

**AS-NNR25LHX-1000**

**AS-NNR25LHX-2500**

**AS-NNR25LHS-0080**

**AS-NNR25DHX-0038**

**AS-NNR25DHX-0080**

**AS-NNR25DHX1-0038**

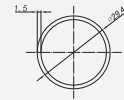
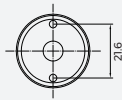
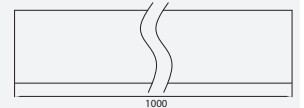
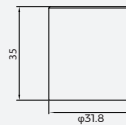
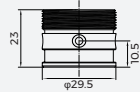
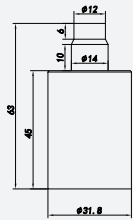
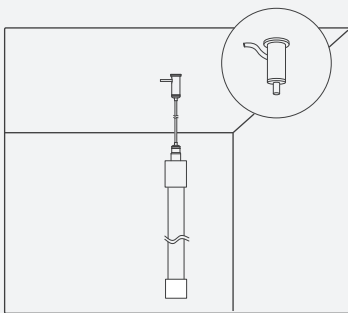


## 【Features】

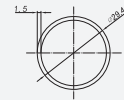
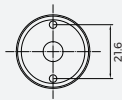
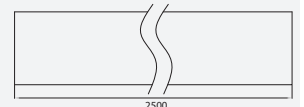
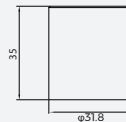
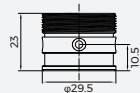
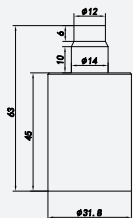
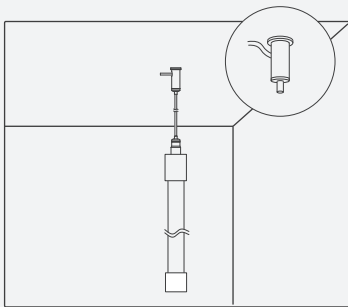
- Material: aluminum;
- Operating environment: indoor;
- Installation: screw flat mounting;
- Warranty: 6 years.

## 【Mechanical Parameter】

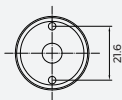
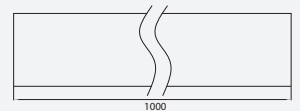
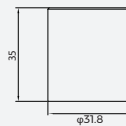
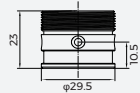
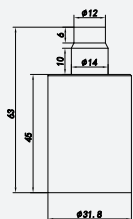
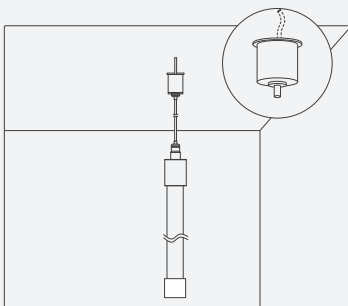
### AS-NNR25VHS1-1000



### AS-NNR25VHS1-2500

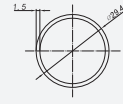
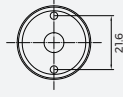
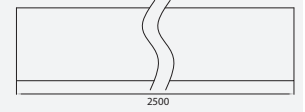
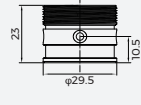
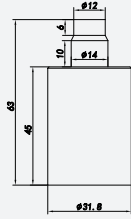
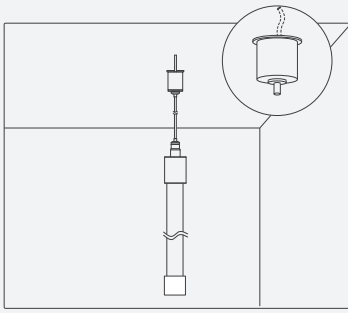


### AS-NNR25VHD1-1000

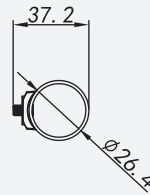
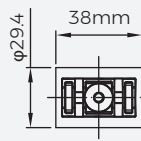
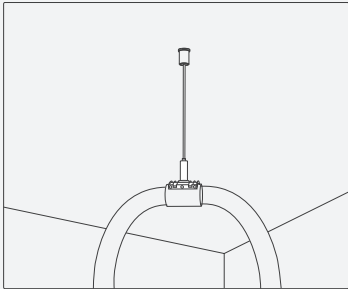


# 【Mechanical Parameter】

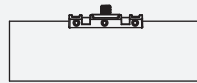
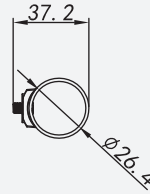
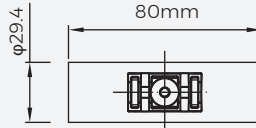
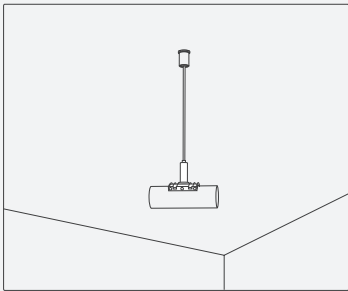
AS-NNR25VHD1-2500



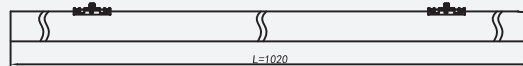
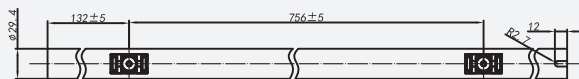
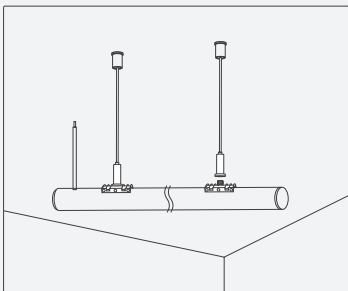
AS-NNR25LHX-0038



AS-NNR25LHX-0080

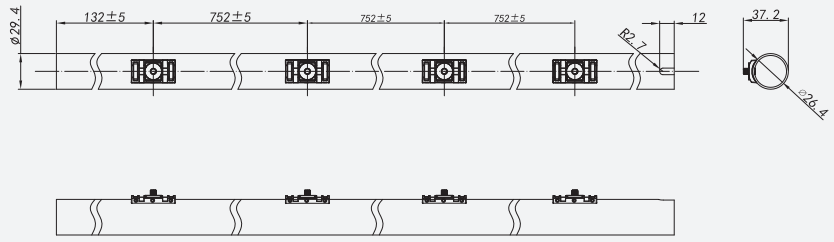
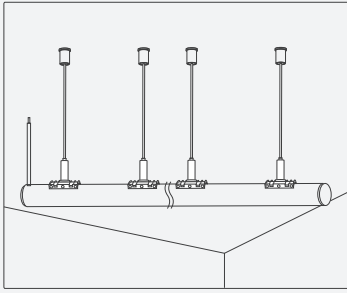


AS-NNR25LHX-1000

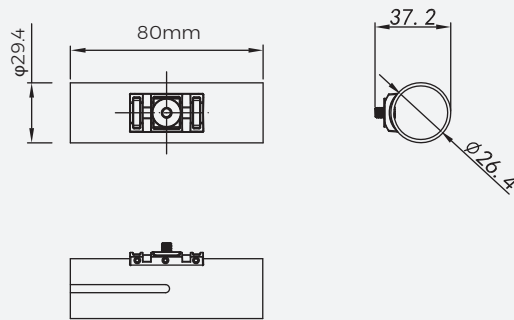
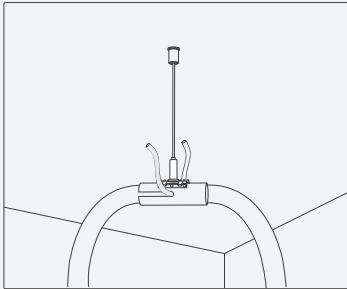


# [Mechanical Parameter]

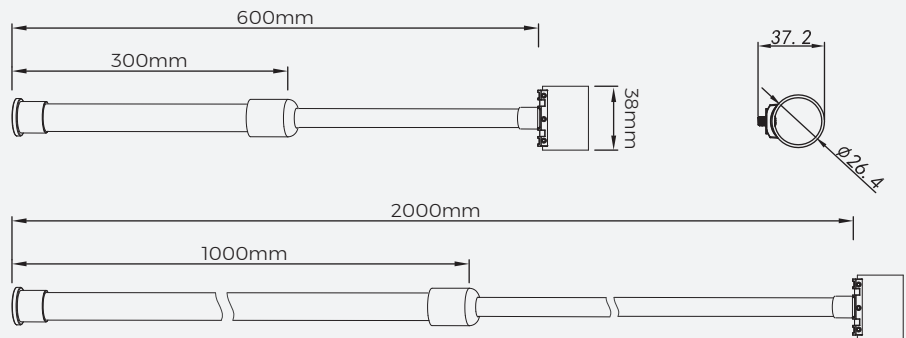
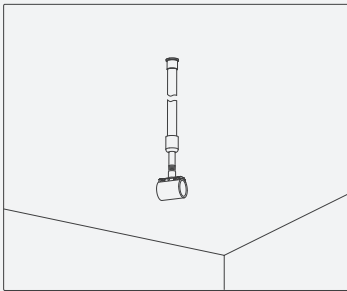
**AS-NNR25LHX-2500**



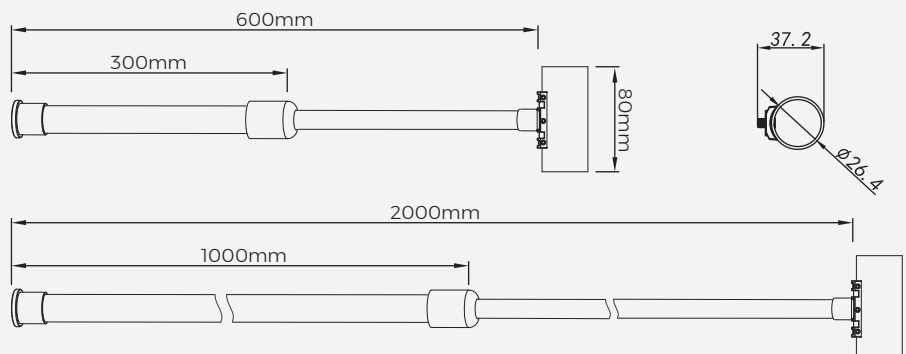
**AS-NNR25LHS-0080**



**AS-NNR25DHX-0038**

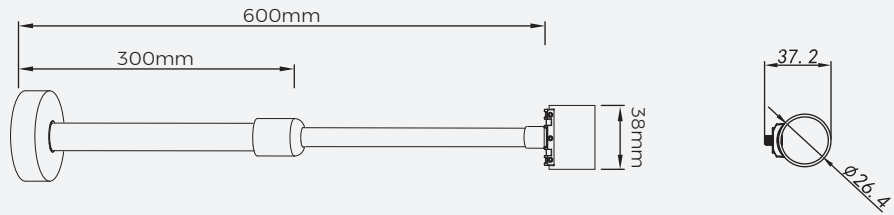
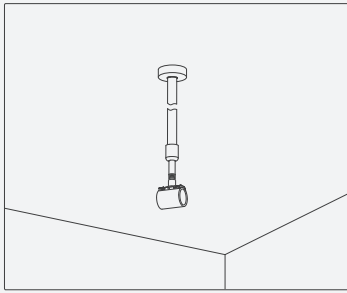


**AS-NNR25DHX-0080**



## [Mechanical Parameter]





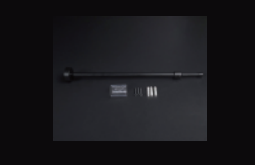
AS-NNR25DHX1-0038



## [Specification information]

Describe	Accessories Picture	Order model	Quantity/ case (PCS)	Net weight (kg)	Per box net weight (kg)	Gross weight (kg)	Packages (mm)	Range of applications
Vertical hanging side outlet Install accessory kit (1m)		AS-NNR25VHS1- 1000	16	0.28	4.40	5.29	1285*160*160	NNR25-XXXXBC0100 Round tube:1M;Wire rope:2M For white, monochrome light only
Vertical hanging side outlet Install accessory kit (1m)		AS-NNR25VHS1- 2500	16	0.52	8.40	10.12	2580*165*165	NNR25-XXXXBC0250 Round tube:2.5M;Wire rope:2M For white, monochrome light only
Vertical hanging side outlet Install accessory kit (1m)		AS-NNR25VHD1- 1000	16	0.31	4.90	5.79	1285*160*160	NNR25-XXXXBC0100 Round tube:1M;Wire rope:2M For white, monochrome light only
Vertical hanging side outlet Install accessory kit (1m)		AS-NNR25VHD1- 2500	16	0.55	8.83	10.55	2580*165*165	NNR25-XXXXBC0250; Round tube:2.5M;Wire rope:2M For white, monochrome light only
Horizontal hoisting Install components (38mm)		AS-NNR25LHX- 0038	96	0.07	6.75	7.35	365*365*190	NNR25-XXXXBC0100 NNR25-XXXXBC0250 NNR25-XXXXBC0500 Round tube:38mm; Wire rope 2pcs; L:2M; Recommended dosage:1PCS/0.5M
Horizontal hoisting Install components (38mm)		AS-NNR25LHX- 0080	48	0.07	3.36	3.96	365*365*190	NNR25-XXXXBC0500 Round tubeL:80mm; Wire rope : 1pcs; L:2M; Recommended dosage:1PCS/0.5M
Horizontal hoisting Install components (1M)		AS-NNR25LHX- 1000	16	0.18	2.88	3.48	1180*125*115	NNR25-XXXXBC0100 Round tubeL:1020mm; Wire rope 2pcs; L:2M;

## [Specification information]

Describe	Accessories Picture	Order model	Quantity/ case (PCS)	Net weight (kg)	Per box net weight (kg)	Gross weight (kg)	Packages (mm)	Range of applications
Horizontal hoisting Install components (2.5M)		AS-NNR25LHX-2500	16	0.33	5.28	6.28	2580*165*165	Round tubeL:2520mm; Wire rope 2pcs 2pcs, L:2M;
NNR25 No dark areas accessory		AS-NNR25LHS-0080	48	0.07	3.36	3.96	365*365*190	Suit to NNR25/NNR25P /NNR25BLK (side out wire)
Can be shaped and hoisted Install components		AS-NNR25DHX-0038	15	0.20	3.00	3.62	415*250*230	NNR25P-XXXXBC0500 Round tube L:38mm; escopic rodL L:0.6M Recommended dosage:1PCS/0.5M
Tail splicing piece (80mm)		AS-NNR25DHX-0080	15	0.21	3.15	3.77	415*250*230	NNR25P-XXXXBC0500 Round tubeL:80mm; escopic rodL :1pcs, L:0.6M; Recommended dosage:1PCS/0.5M
Can be shaped and hoisted Install components		AS-NNR25DHX1-0038	15	0.26	3.9	4.52	415*250*230	NNR25P-XXXXBC0500 Round tube L:38mm; escopic rodL L:0.6M Recommended dosage:1PCS/0.5M

## [Precautions]

- Do not use any acid or alkaline adhesive to fix products(including not limited to glass cement,etc).
- After the installation of the lamps and lanterns is completed, do not pull violently, to avoid damage to the lamp.
- Maximum lifting weight of accessories is 4kg(No more than 4 meters).
- Welding of wires and plate must be done in a dry environment.